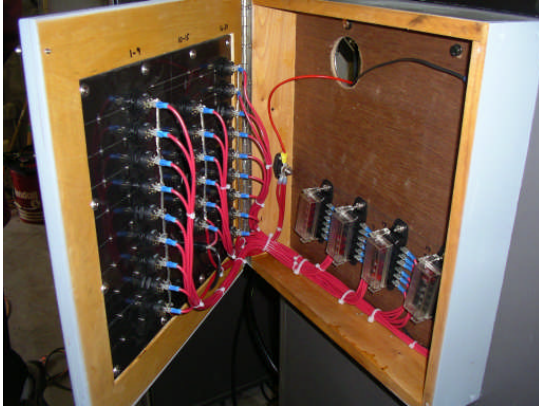
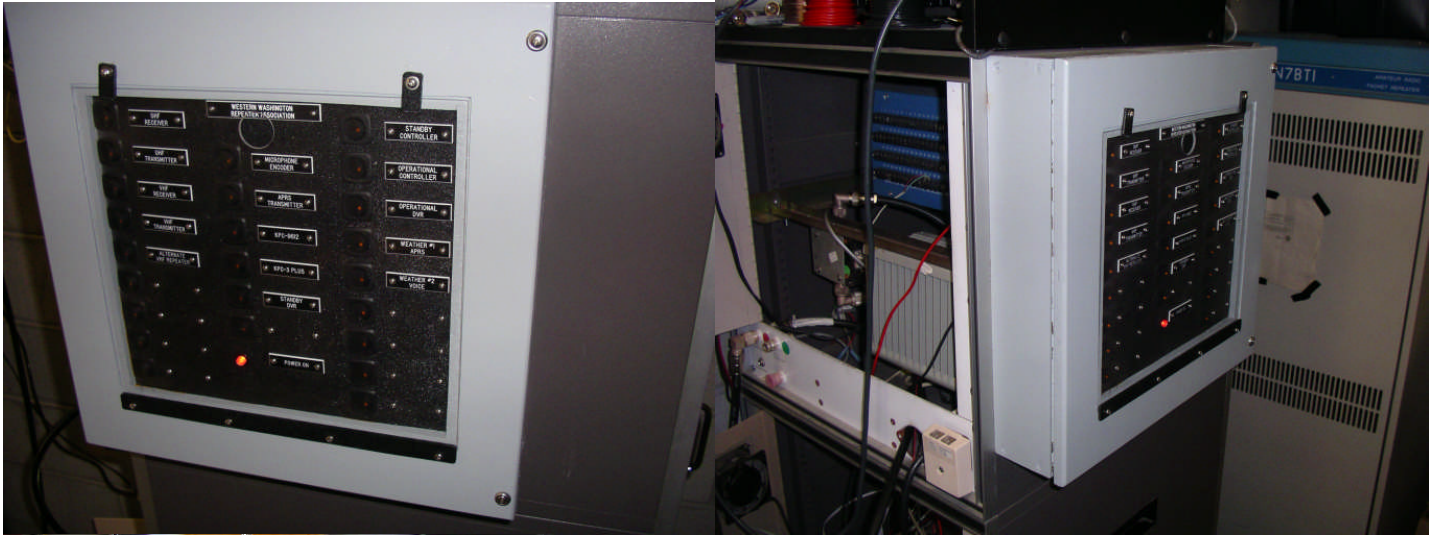


# Western Washington Repeater Association



## Switches ( Inside Panel )

1	Standby Controller	10	Microphone Encoder	16	UHF Receiver
2	Operational Controller	11	APRS Transmitter	17	UHF Transmitter
3	Operational DVR	12	KPC-9612	18	VHF Receiver
4	Weather #1 APRS	13	KPC-3 Plus	19	VHF Transmitter
5	Weather #2 Voice	14	Standby DVR	20	Alternate VHF Repeater
6	Spare	15	Spare	21	Spare
7	Spare			22	Spare
8	Spare			23	Spare
9	Spare			24	Spare

## Fuse Blocks

1		7		13		19	
2		8		14		20	
3		9		15		21	
4		10		16		22	
5		11		17		23	
6		12		18		24	